

ADDITIONAL RUNWAY INFORMATION

RWY	HIRL	HIALS	PAPI-L (angle 3.0°)	RVR	USABLE LENGTHS		TAKE-OFF	WIDTH
					Threshold	Glide Slope		
06	1	1	1		7065'	2153m	2	197'
24	1	1	1					60m

1 ALS-(red) also available.

2 TAKE-OFF RUN AVAILABLE

RWY 06

From rwy head 8202'(2500m)
twy int C 3947'(1203m)

RWY 24

From rwy head 8202'(2500m)
twy int D 5915'(1803m)
twy int C 4337'(1322m)

Standard

TAKE-OFF 1 & DEPARTURE PROCEDURE

	LVP must be in Force		
	RCLM (DAY only) or RL	RCLM (DAY only) or RL	NIL (DAY only)
A			
B	250m	400m	500m
C			
D	300m		

1 Operators applying U.S. Ops Specs: CL required below 300m.

OMNIDIRECTIONAL DEPARTURE PROCEDURE

RWY 06: Climb STRAIGHT AHEAD to minimum turning alt 1020'.
(CIO) CLOSE-IN-OBSTACLE: obstacle 493' (N61 03.5 E028 11.2).

RWY 24: Climb STRAIGHT AHEAD to minimum turning alt 790'.

NOISE ABATEMENT PROCEDURE

Flying below 2000' over the area of Lappeenranta city must be avoided, unless lower altitude is necessary for take-off or landing.

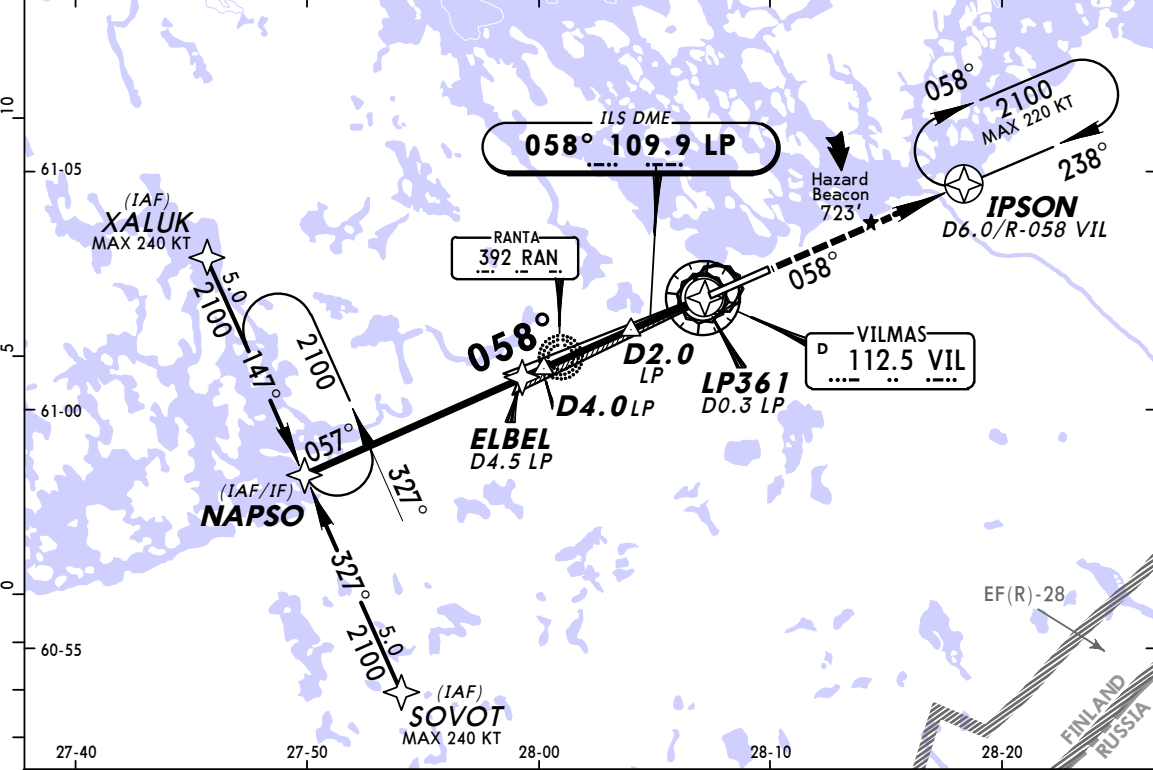
EFLP/LPP
LAPPEENRANTA

25 MAY 12
Eff 31 May

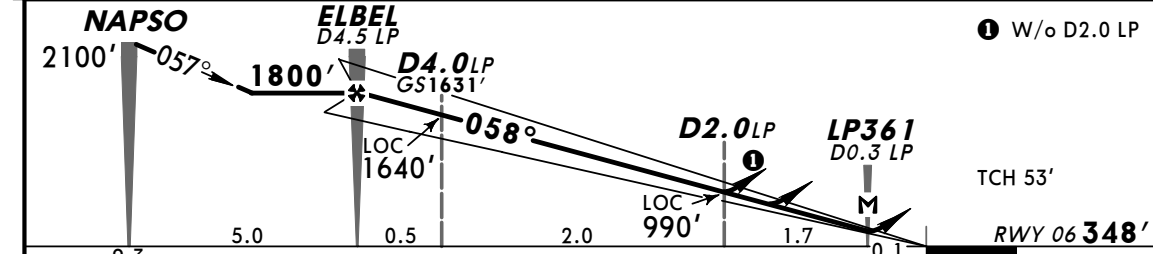
(11-1)

JEPPESEN LAPPEENRANTA, FINLAND
ILS Z or LOC Z Rwy 06

D-ATIS 112.5				*LAPPEENRANTA Tower 120.2 119.7	
LOC LP 109.9	Final Apch Crs 058°	GS D4.0 LP 1631' (1283')	ILS DA(H) 548' (200')	Apt Elev 349'	2100' MSA ARP
MISSED APCH: RNAV: Proceed on 058° to at or above 800', then to IPSON climbing to 2100'. NON-RNAV: Climb on R-058 VIL to IPSON to 2100'.					
Alt Set: hPa Rwy Elev: 13 hPa Trans level: By ATC Trans alt: 5000' 1. GNS required. 2. RNAV approach approval required.					



LOC (GS out)	LP DME	4.0	3.0	2.0
	ALTITUDE	1640'	1320'	1000'



Gnd speed-Kts	70	90	100	120	140	160	HIALS PAPI	Refer to Missed Apch above
ILS GS or LOC Descent angle 3.00°	372	478	531	637	743	849		
MAP at LP361/D0.3 LP								

PANS OPS	Standard ILS STRAIGHT-IN LANDING RWY 06						CIRCLE-TO-LAND	
	ILS DA(H) 548' (200')			LOC (GS out) DA(H) 740' (392')			W/o D2.0 LP DA(H) 990' (642')	
	FULL	Limited	ALS out	ALS out	ALS out	ALS out	Max Kts	MDA(H) _____ VIS _____
	A						100	1860' (511') 1500m
	B				RVR 1500m	RVR 1500m	135	1020' (671') 1600m
C	RVR 550m	RVR 750m	RVR 1200m	RVR 1100m			180	1120' (771') 2400m
D				RVR 1800m	CMV 2300m	CMV 2400m	205	1120' (771') 3600m

After apch w/o D2.0 LP: MDA(H) 1000' (651').

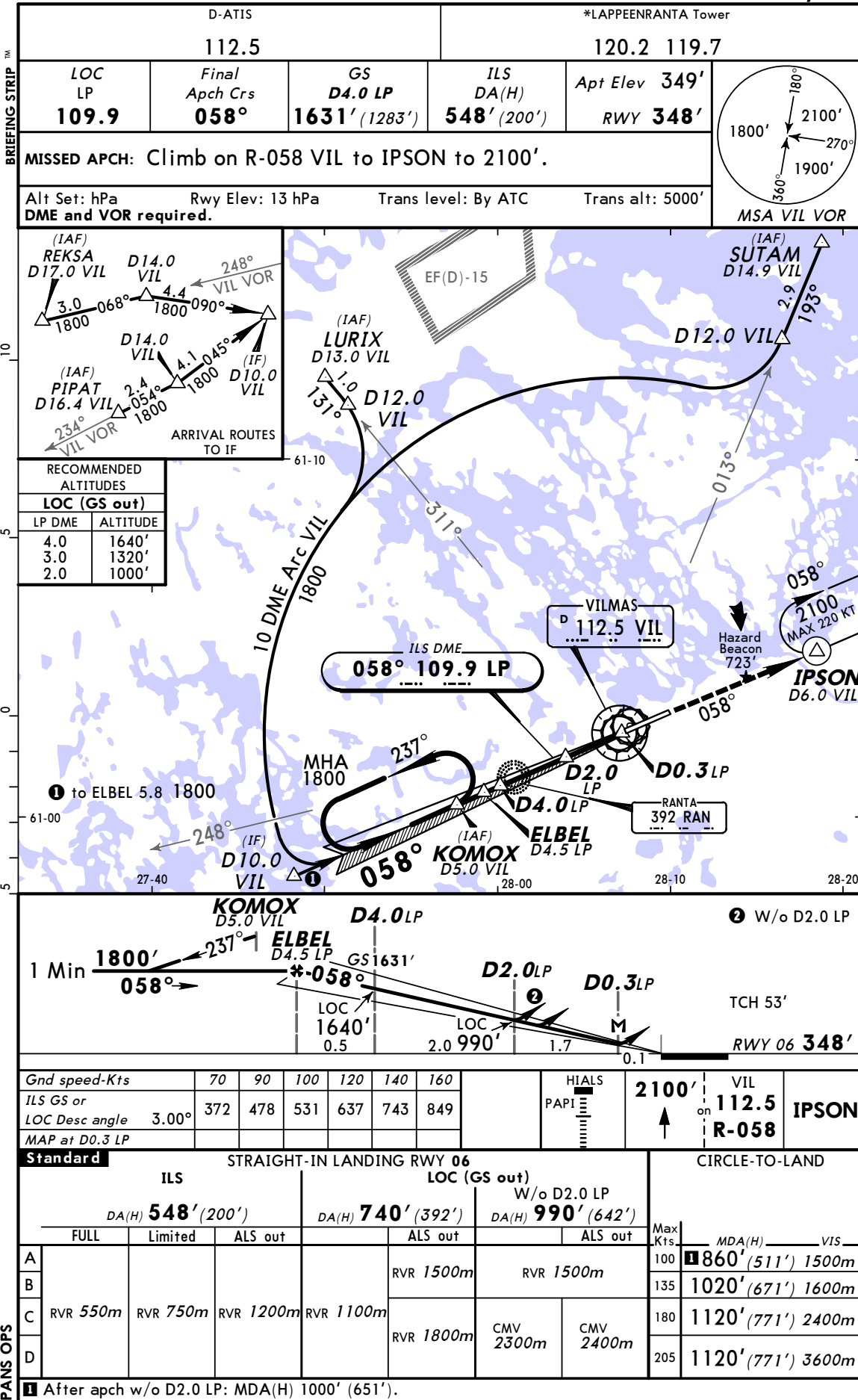
CHANGES: New procedure.

© JEPPESEN, 2012. ALL RIGHTS RESERVED.

EFLP/LPP
LAPPEENRANTA

JEPPESEN
25 MAY 12
Eff 31 May (11-2)

LAPPEENRANTA, FINLAND
ILS Y or LOC Y Rwy 06



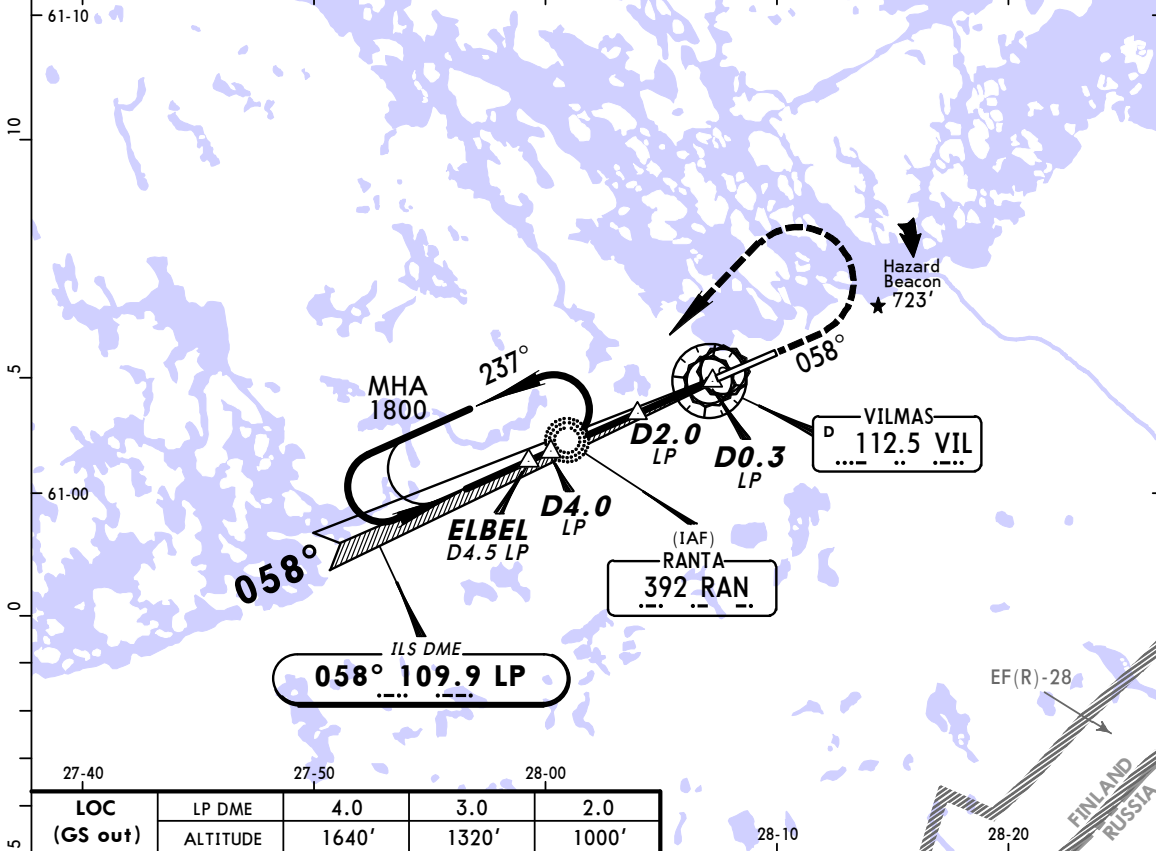
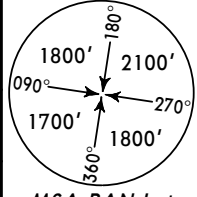
PANS OPS

After apch w/o D2.0 LP: MDA(H) 1000' (651').

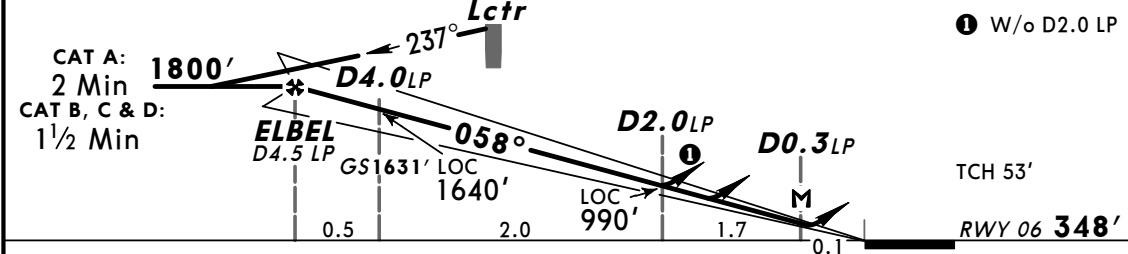
CHANGES: Procedure. Minimums.

© JEPPESEN, 2006, 2012. ALL RIGHTS RESERVED.

D-ATIS 112.5				*LAPPEENRANTA Tower 120.2 119.7	
LOC LP 109.9	Final Apch Crs 058°	GS D4.0 LP 1631' (1283')	ILS DA(H) 548' (200')	Apt Elev 349'	RWY 348'
MISSED APCH: Climb on track 058° to 1300', then turn LEFT (MAX 220 KT) to Lctr climbing to 1800'.					
Alt Set: hPa		Rwy Elev: 13 hPa	Trans level: By ATC	Trans alt: 5000'	
ADF and DME required.					MSA RAN Lctr



LOC (GS out)	LP DME	4.0	3.0	2.0
	ALTITUDE	1640'	1320'	1000'

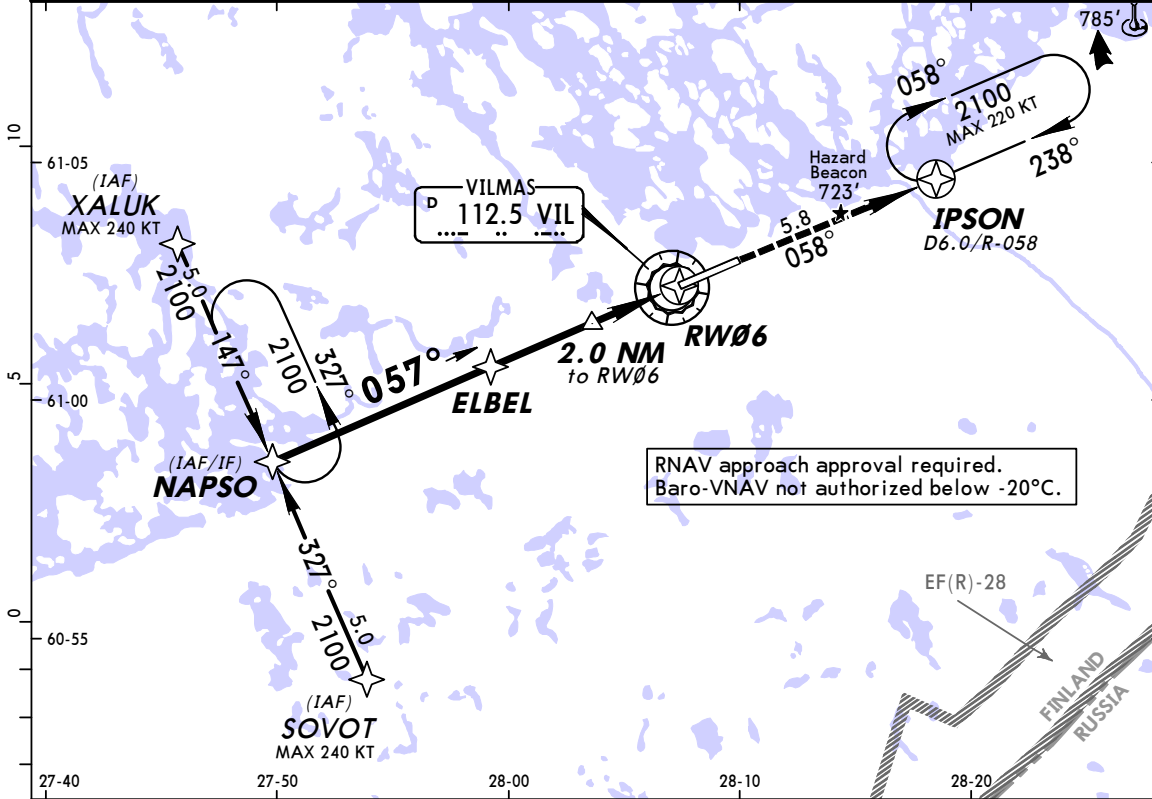


Gnd speed-Kts	70	90	100	120	140	160	HIALS PAPI 	1300'	on 058°
ILS GS or LOC Desc angle 3.00°	372	478	531	637	743	849			
MAP at D0.3 LP									

Standard						STRAIGHT-IN LANDING RWY 06		CIRCLE-TO-LAND	
ILS			LOC (GS out)			W/o D2.0 LP			
DA(H) 548' (200')			DA(H) 740' (392')			DA(H) 990' (642')			
FULL	Limited	ALS out	ALS out	ALS out	ALS out	ALS out	Max Kts.	MDA(H)	VIS
A							100	1860' (511')	1500m
B							135	1020' (671')	1600m
C	RVR 550m	RVR 750m	RVR 1200m	RVR 1100m	RVR 1500m	RVR 1500m	180	1120' (771')	2400m
D					RVR 1800m	CMV 2300m	205	1120' (771')	3600m

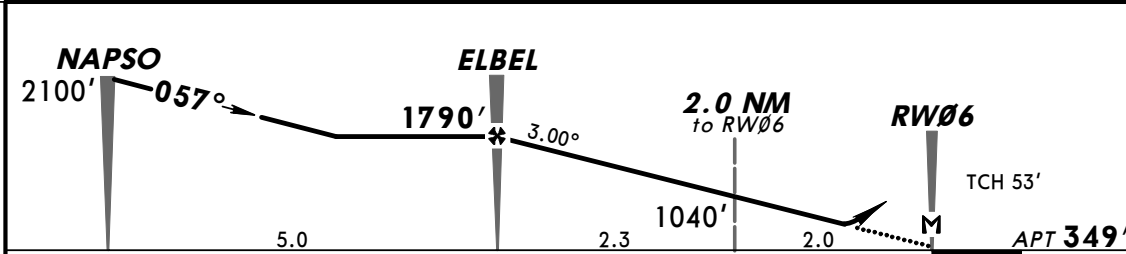
After apch w/o D2.0 LP: MDA(H) 1000' (651').

D-ATIS 112.5			*LAPPEENRANTA Tower 120.2 119.7		
RNAV	Final Apch Crs 057°	Minimum Alt ELBEL 1790' (1441')	LNAV/VNAV DA(H) 749' (400')	Apt Elev 349'	2100'
MISSED APCH: RNAV: Proceed from RW06 to IPSON climbing to 2100'. NON-RNAV: Climb on R-058 to IPSON to 2100'.					
Alt Set: hPa	Apt Elev: 13 hPa	Trans level: By ATC	Trans alt: 5000'	MSA ARP	



RNAV approach approval required.
Baro-VNAV not authorized below -20°C.

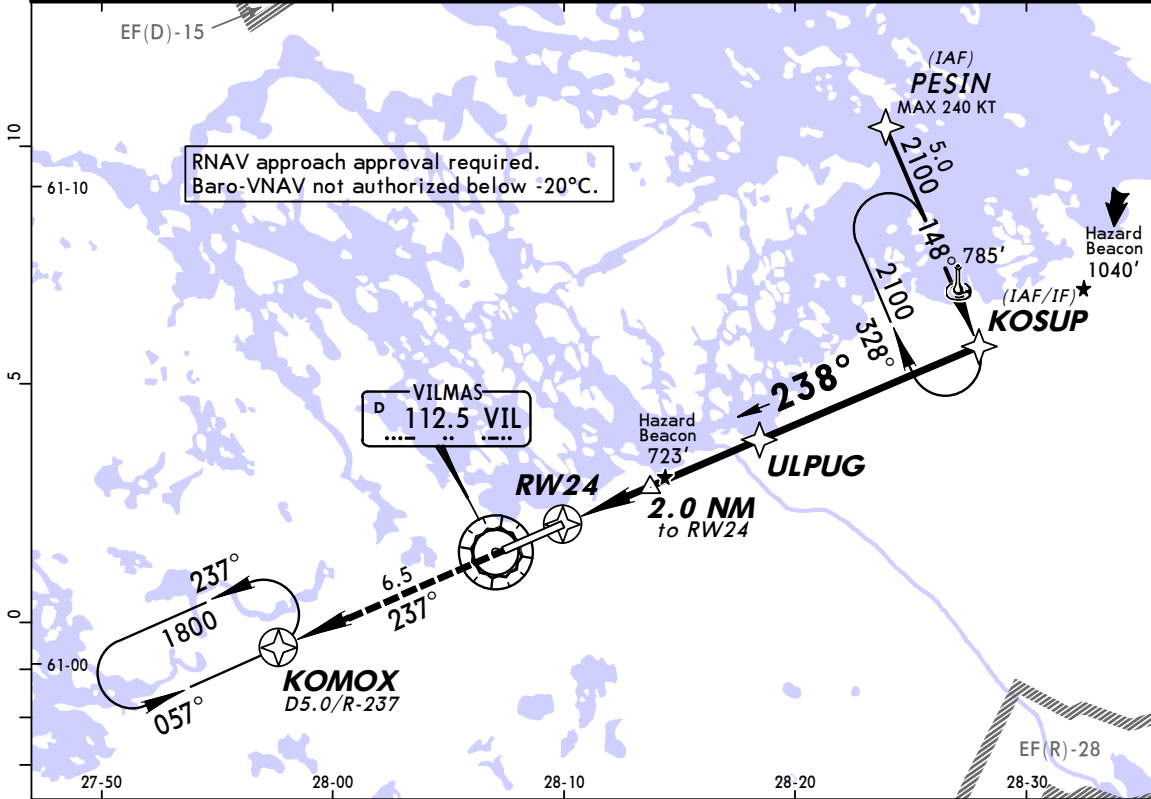
DIST to RW06	4.0	3.0	2.0
ALTITUDE	1680'	1360'	1040'



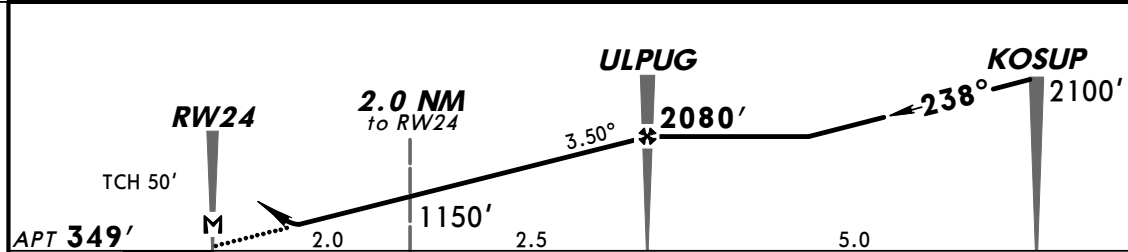
Gnd speed-Kts	70	90	100	120	140	160	HIALS PAPI Refer to Missed Apch above
Descent angle 3.00°	372	478	531	637	743	849	
MAP at RW06							

Standard				STRAIGHT-IN LANDING RWY 06			
LNAV/VNAV DA(H) 749' (400')		ALS out		LNAV DA(H) 760' (441')		ALS out	
A		RVR 1500m			RVR 1500m		
B							
C	RVR 1100m		RVR 1400m			CMV 2100m	
D		RVR 1800m					

D-ATIS 112.5		*LAPPEENRANTA Tower 120.2 119.7			
RNAV	Final Apch Crs 238°	Minimum Alt ULPUG 2080' (1731')	LNAV/VNAV DA(H) 779' (430')	Apt Elev 349'	2100'
MISSED APCH: RNAV: Proceed from RW24 to KOMOX climbing to 1800'. NON-RNAV: Climb on R-237 to KOMOX to 1800'.					
Alt Set: hPa	Apt Elev: 13 hPa	Trans level: By ATC	Trans alt: 5000'	MSA ARP	



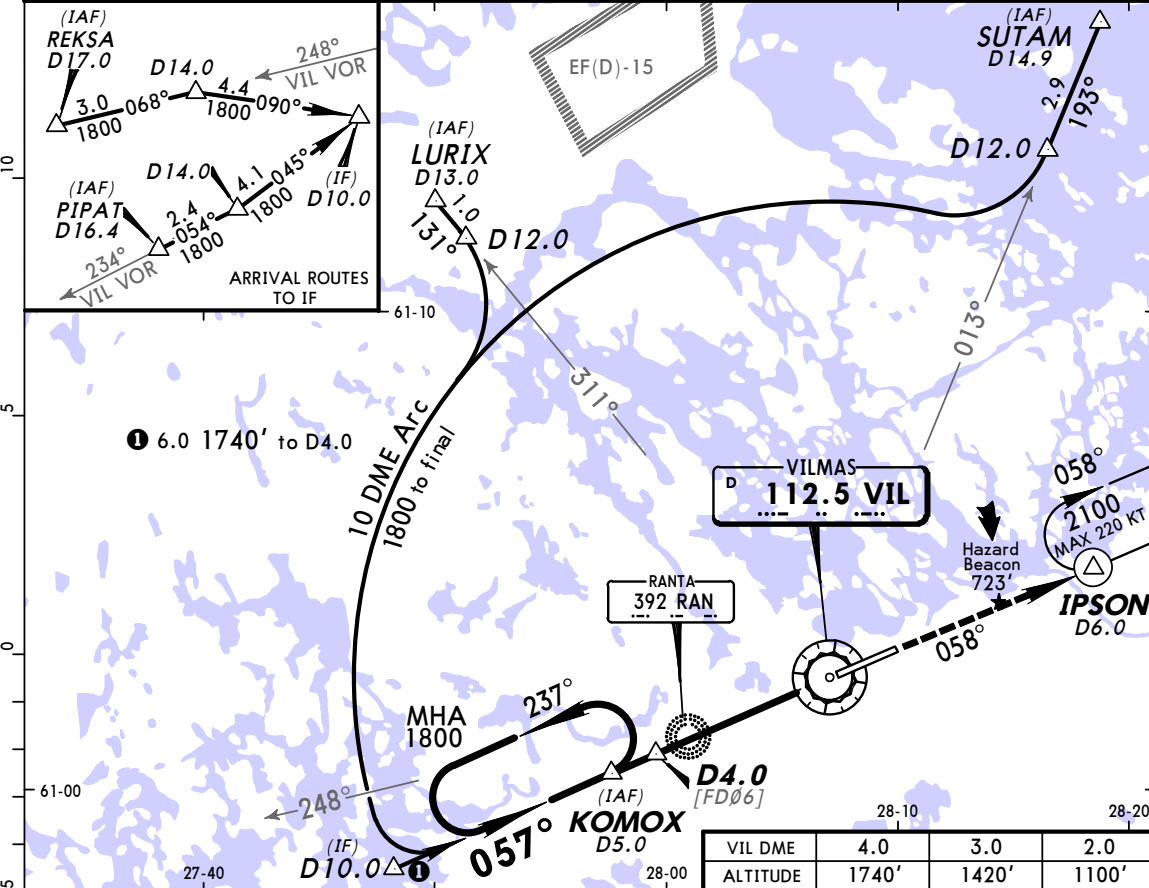
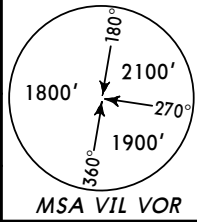
DIST to RW24	1.0	2.0	3.0	4.0
ALTITUDE	780'	1150'	1520'	1890'



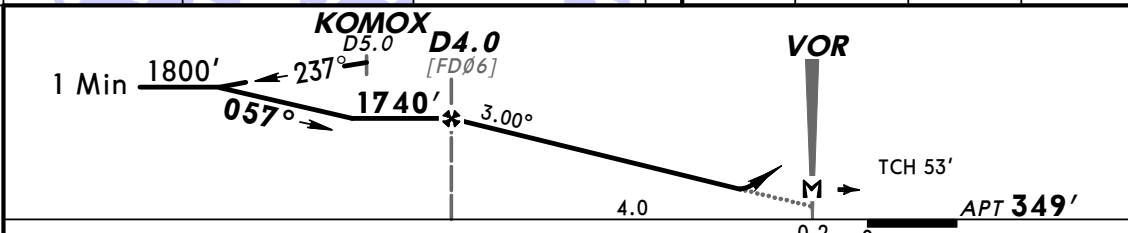
Gnd speed-Kts	70	90	100	120	140	160	HIALS PAPI Refer to Missed Apch above
Descent angle 3.50°	434	557	619	743	867	991	
MAP at RW24	Standard						

STRAIGHT-IN LANDING RWY 24			
LNAV/VNAV DA(H) 779' (430')		LNAV DA(H) 780' (431')	
ALS out		ALS out	
A	RVR 1500m		RVR 1500m
B	RVR 1500m		RVR 1500m
C	RVR 1600m	RVR 2000m	RVR 2000m
D	RVR 1600m	RVR 2000m	RVR 2000m

D-ATIS 112.5		*LAPPEENRANTA Tower 120.2 119.7		
VOR VIL 112.5	Final Apch Crs 057°	Minimum Alt D4.0 1740' (1391')	DA(H) 820' (471')	Apt Elev 349'
MISSED APCH: Climb on R-058 to IPSON to 2100'.				
Alt Set: hPa DME required.		Apt Elev: 13 hPa	Trans level: By ATC	Trans alt: 5000'



VIL DME	4.0	3.0	2.0
ALTITUDE	1740'	1420'	1100'

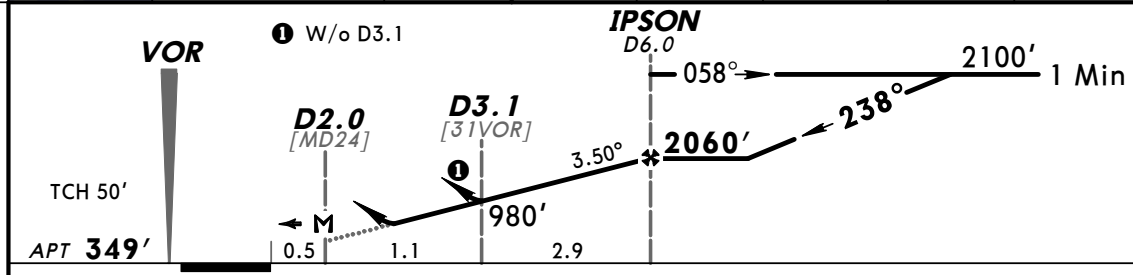
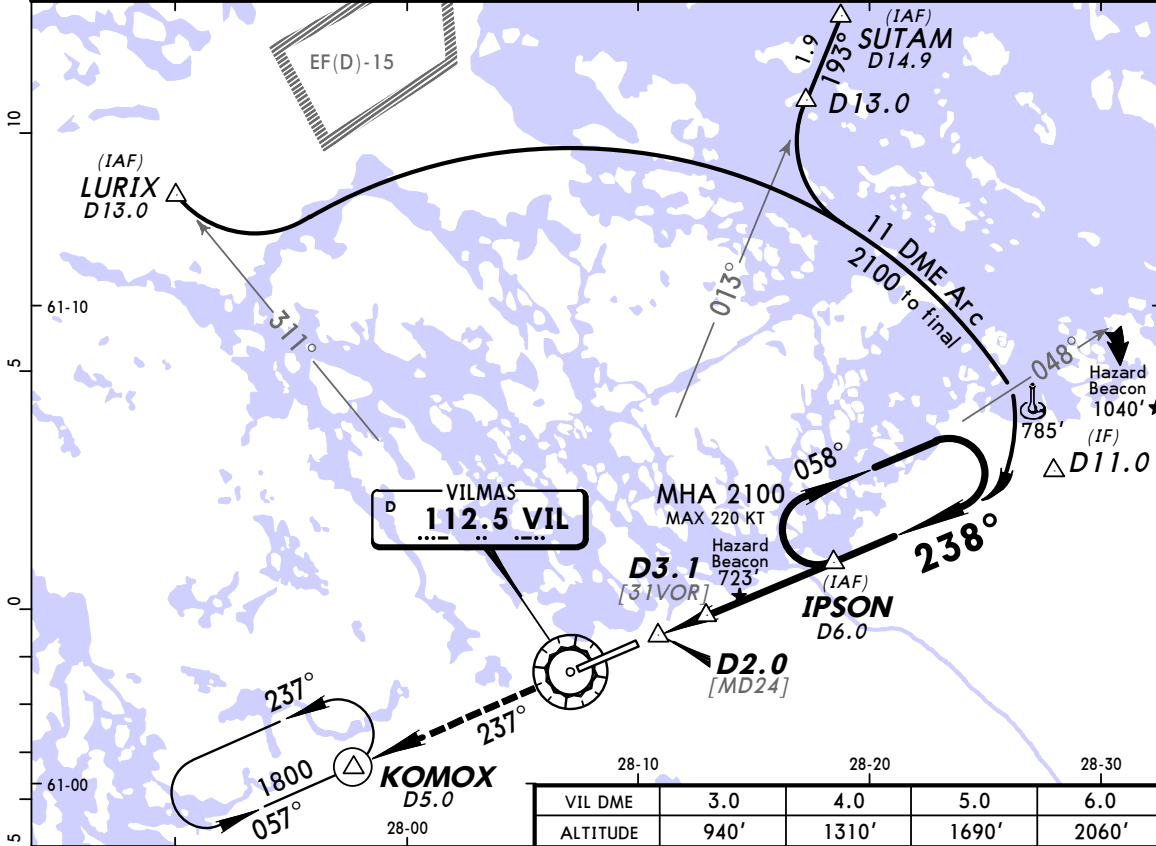
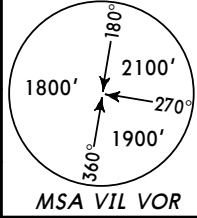


Gnd speed-Kts	70	90	100	120	140	160	HIALS PAPI	2100' ↑ on 112.5 R-058 IPSON	
Descent angle	3.00°	372	478	531	637	743			849
MAP at VOR									

Standard		STRAIGHT-IN LANDING RWY 06		CIRCLE-TO-LAND	
DA(H) 820 (471')		ALS out		Max Kts	MDA(H) _____ VIS _____
A		RVR 1500m		100	860' (511') 1500m
B		RVR 1500m		135	1020' (671') 1600m
C	RVR 1500m	CMV 2200m		180	1120' (771') 2400m
D		CMV 2200m		205	1120' (771') 3600m

PANS OPS

D-ATIS 112.5			*LAPPEENRANTA Tower 120.2 119.7		
VOR VIL 112.5	Final Apch Crs 238°	Minimum Alt IPSON 2060' (1711')	DA(H) (CONDITIONAL) 780' (431')	Apt Elev 349'	
MISSED APCH: Climb on R-237 to KOMOX to 1800'.					
Alt Set: hPa		Apt Elev: 13 hPa	Trans level: By ATC		Trans alt: 5000'
1. DME required.		2. Racetrack restricted to MAX 220 KT.		MSA VIL VOR	

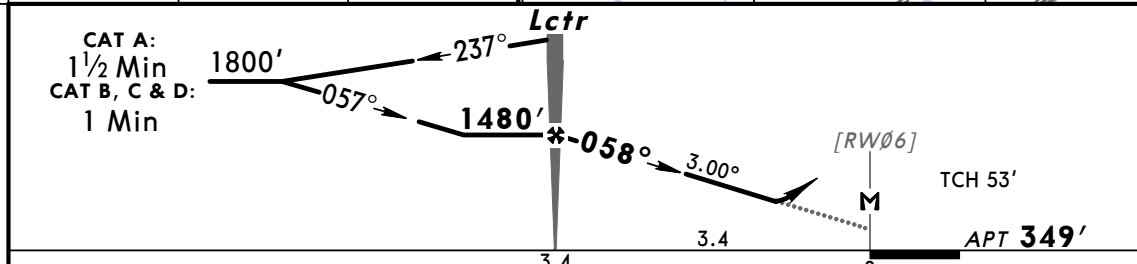
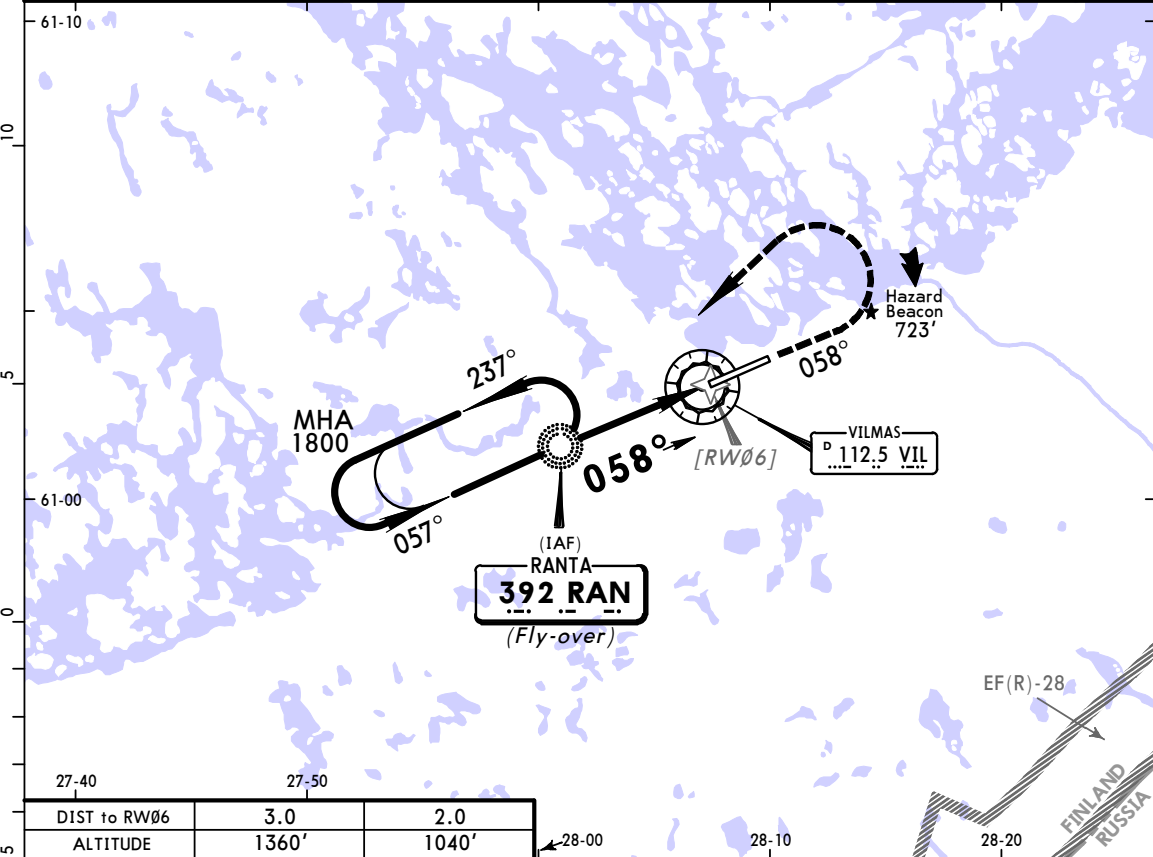


Gnd speed-Kts	70	90	100	120	140	160	HIALS PAPI	1800'	VIL on R-237	KOMOX	
Descent angle	3.50°	434	557	619	743	867					991
MAP at D2.0											

Standard				STRAIGHT-IN LANDING RWY 24				CIRCLE-TO-LAND			
DA(H) 780' (431')		W/o D3.1 DA(H) 980' (631')		Max Kts		MDA(H)		VIS			
ALS out		ALS out		100	860' (511')		1500m				
RVR 1500m		RVR 1500m		135	1020' (671')		1600m				
RVR 1600m		RVR 2000m		180	1120' (771')		2400m				
		CMV 2400m		205	1120' (771')		3600m				

1 After apch w/o D3.1: MDA(H) 980' (631').
CHANGES: Minimums. © JEPPESSEN, 1998, 2012. ALL RIGHTS RESERVED.

D-ATIS 112.5				*LAPPEENRANTA Tower 120.2 119.7	
Lctr RAN 392	Final Apch Crs 058°	Minimum Alt Lctr 1480' (1131')	DA(H) 820' (471')	Apt Elev 349'	
MISSED APCH: Climb on track 058° to 1300', then turn LEFT (MAX 220 KT) to Lctr climbing to 1800'.					
Alt Set: hPa	Apt Elev: 13 hPa	Trans level: By ATC	Trans alt: 5000'		
					MSA RAN Lctr



Gnd speed-Kts	70	90	100	120	140	160		1300' on 058°	
Descent angle	3.00°	372	478	531	637	743			849
Lctr to MAP	3.4	2:55	2:16	2:02	1:42	1:27			1:16

Standard STRAIGHT-IN LANDING RWY 06			CIRCLE-TO-LAND		
DA(H) 820' (471')					
A	RVR 1500m	ALS out	Max Kts	MDA(H)	VIS
B		RVR 1500m	100	860' (511')	1500m
C		CMV 2200m	135	1020' (671')	1600m
D			180	1120' (771')	2400m
			205	1120' (771')	3600m